

**PROPOSED MATERIAL PALETTE - OPEN SPACE TYPE 2**



**PRIMARY WALKWAYS**



UNIT PAVERS

**COMPANY:** Hanover  
**PRODUCTS:** Prest Brick  
**SIZE:**  
 Pervious: 4"x8" (with integral lugs)  
 Impervious: 4"x8"  
**THICKNESS:**  
 Pedestrian: 2"  
 Vehicular: 3"  
**COLOR:** Super Black, Charcoal, or Matrix B9115  
**PATTERN:** Running bond  
**SRI INDEX:** Super Black (SRI 14), Charcoal (SRI N/A), or Matrix B9115 (SRI 42)

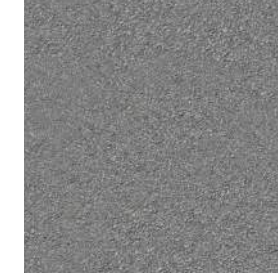


**SECONDARY WALKWAYS**



CAST-IN-PLACE CONCRETE PAVING

**PROFILE:**  
 4.5" Concrete Slab  
 WWM Reinforcement  
 12" Compacted Aggregate Base Course



ASPHALT PAVING

**PROFILE:**  
 1" Asphaltic Concrete Wear Course  
 2" Asphaltic Concrete Binder Course  
 12" Compacted Aggregate Base Course  
 Pervious Pavement



ASPHALT PAVING WITH BRICK EDGE

**DOMINANT PLANT MATERIAL PALETTE**

**TREE FRAMEWORK FOR MAJOR STREETS AND SPACES:**

- Willow Oak
- Tulip Poplar

**SPECIMEN GROVES NEAR BUILDING, DINING AND SERVICE COURTS:**

- Honey Locust
- White Asian Birch
- Kousa Dogwood

**GROUNDCOVERS:**

- Majority lawns
- Groundcovers in courts and "stormwater courts"

**Note:**

1: Plant species contingent on review and approval by the Old Georgetown Board and the Commission of Fine Arts.

COURTESY OF GEORGETOWN UNIVERSITY AND DUMONT JANKS



AERIAL VIEW FROM NORTH EAST



VIEW LOOKING AT NORTH EAST CORNER



RESERVOIR ROAD VIEW LOOKING AT NORTH EAST CORNER



VIEW LOOKING AT NORTH WEST CORNER



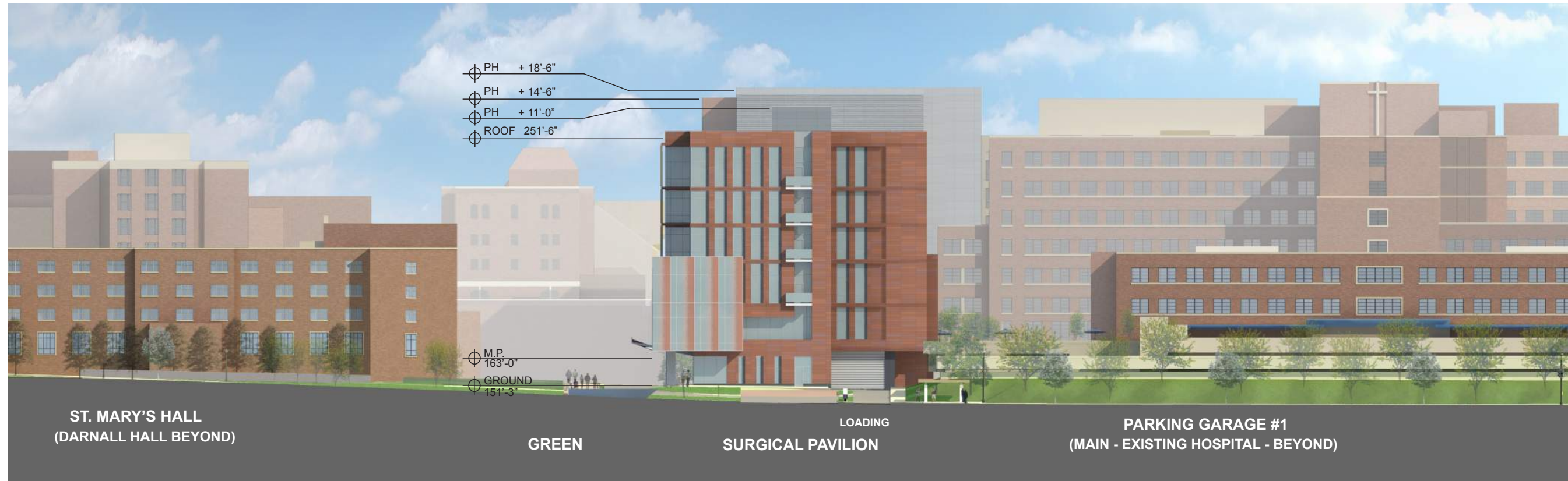
VIEW FROM RESERVOIR ROAD LOOKING AT NORTH ELEVATION



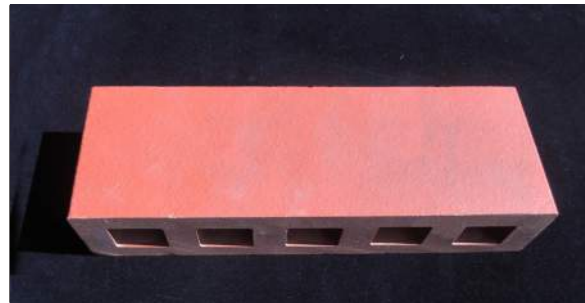
VIEW LOOKING AT SOUTH EAST CORNER



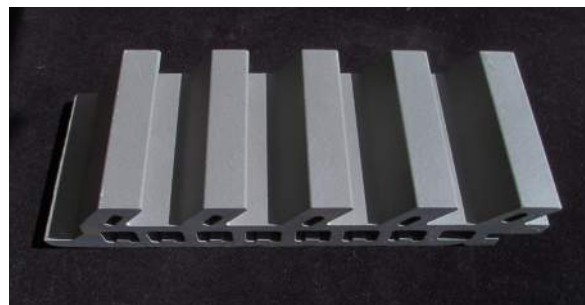
EAST ELEVATION



NORTH ELEVATION



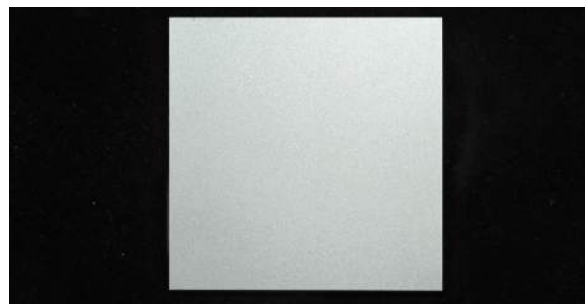
TERRA COTTA FINS



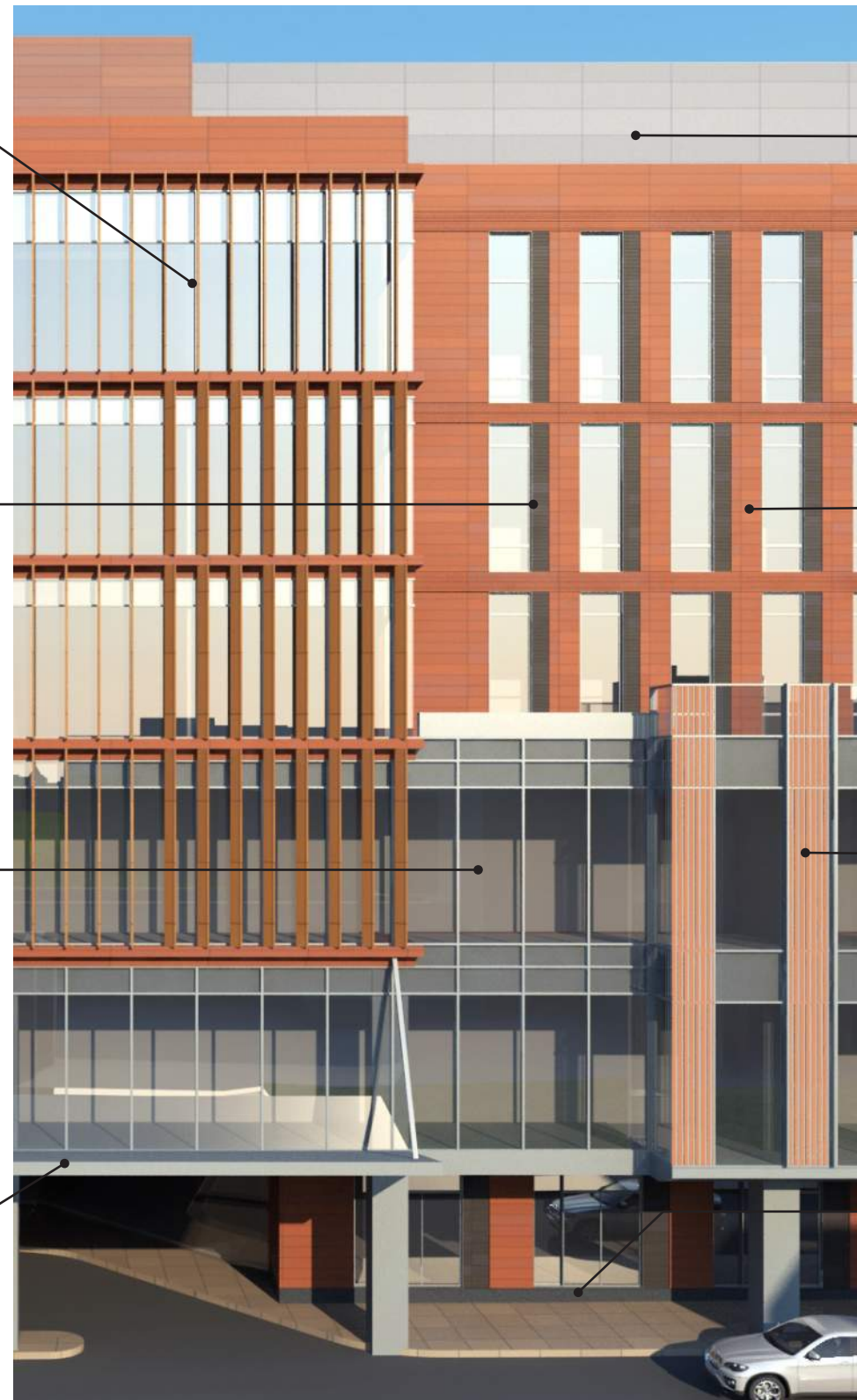
DARK GREY TERRACOTTA



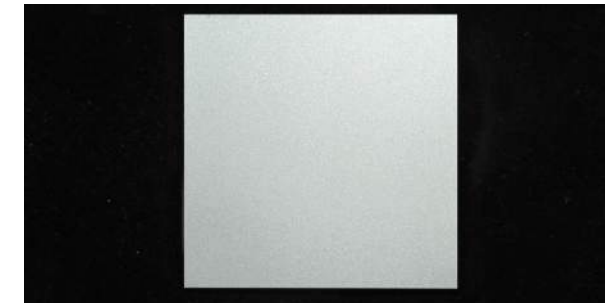
CLEAR LOW-E INSULATED GLASS



METAL PANEL CANOPY



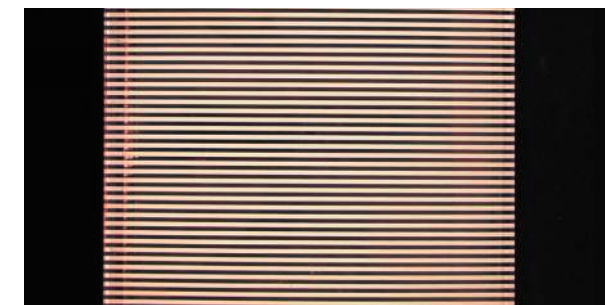
EAST FACADE DETAIL



METAL PANEL



TERRACOTTA

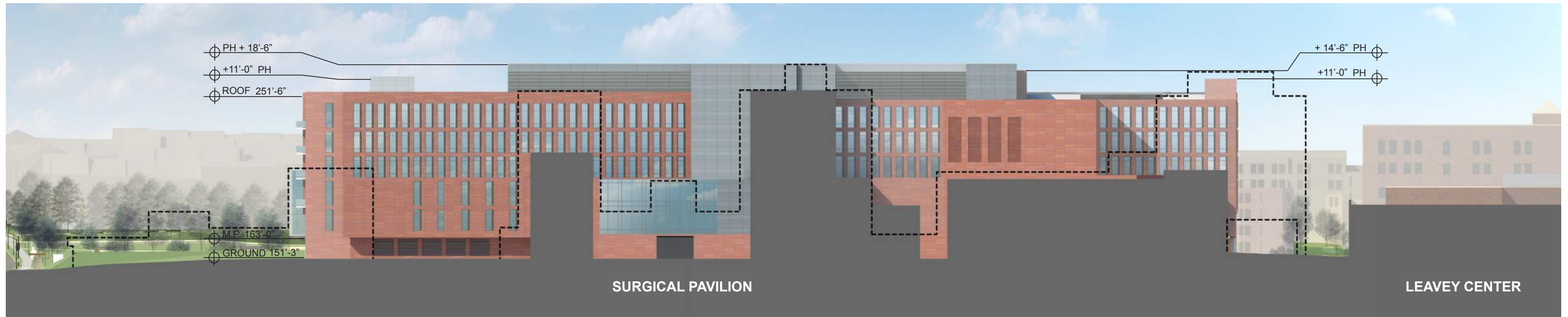


FRITTED INSULATED GLASS

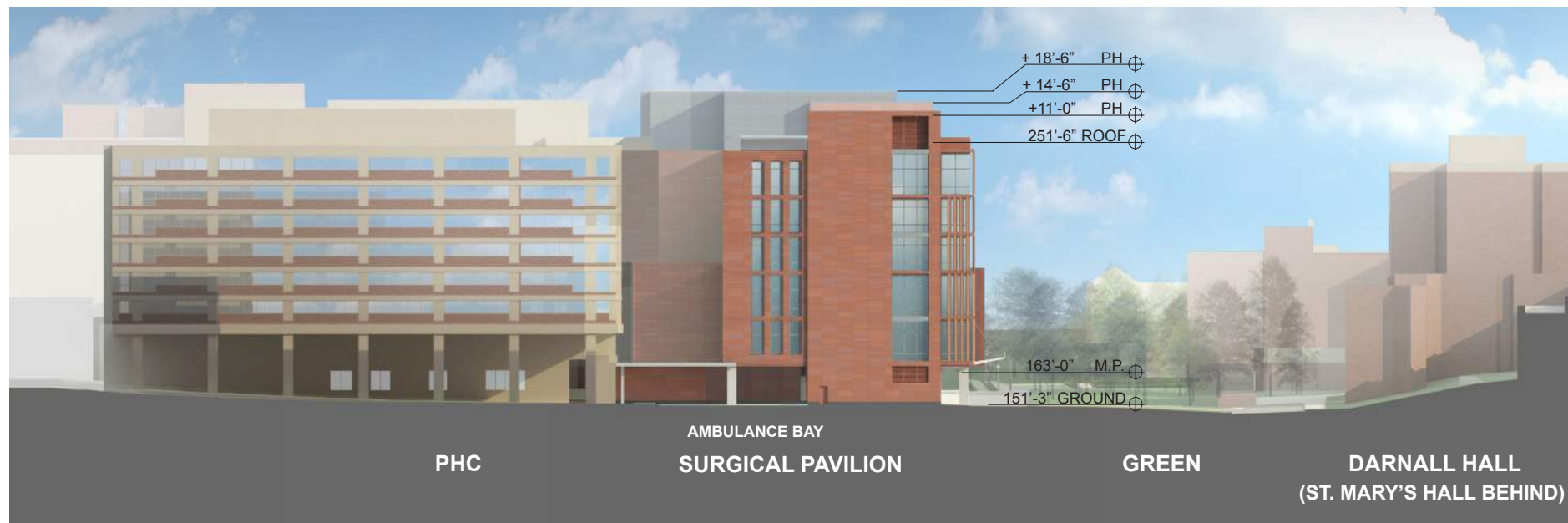


GRANITE BASE

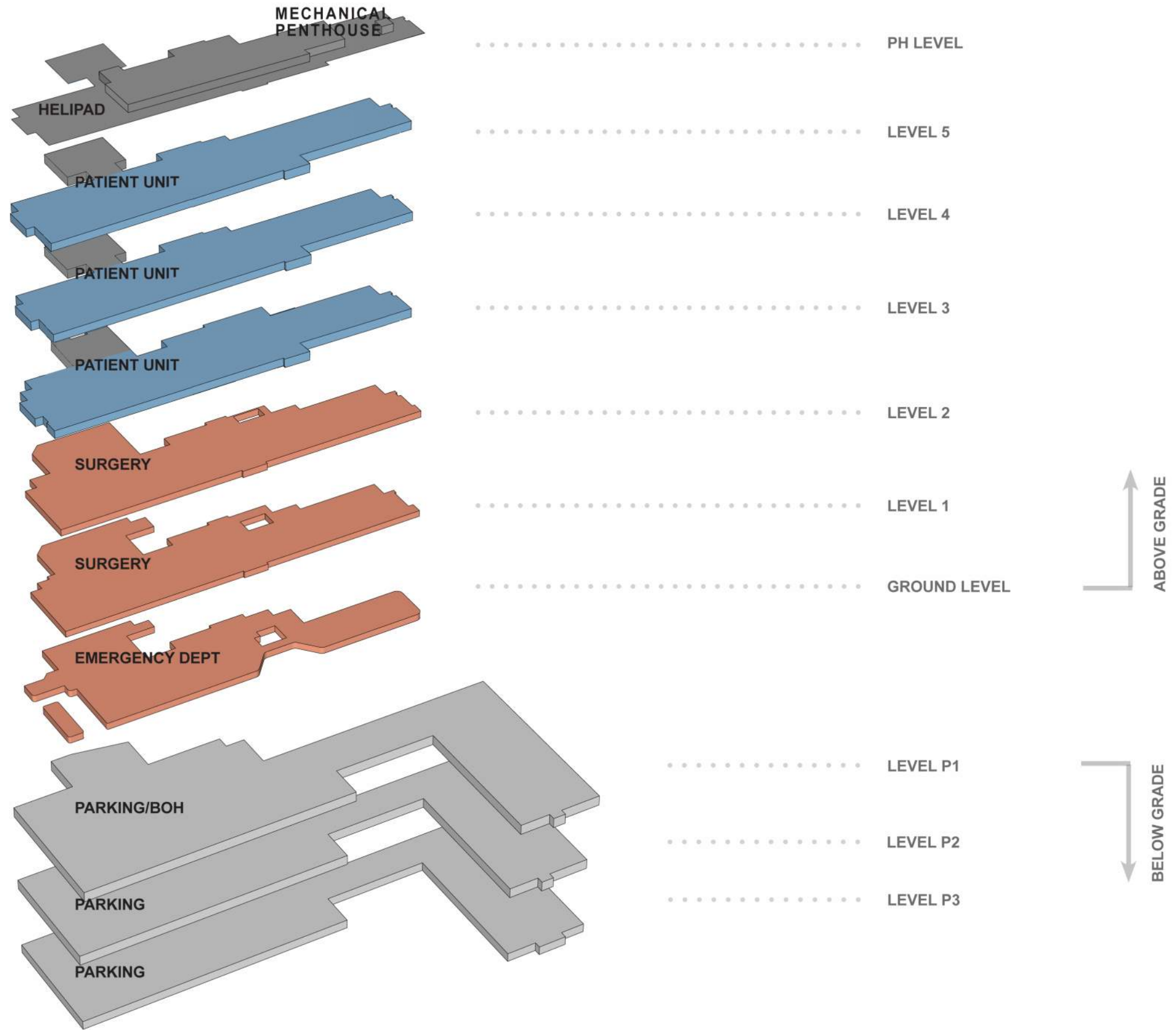


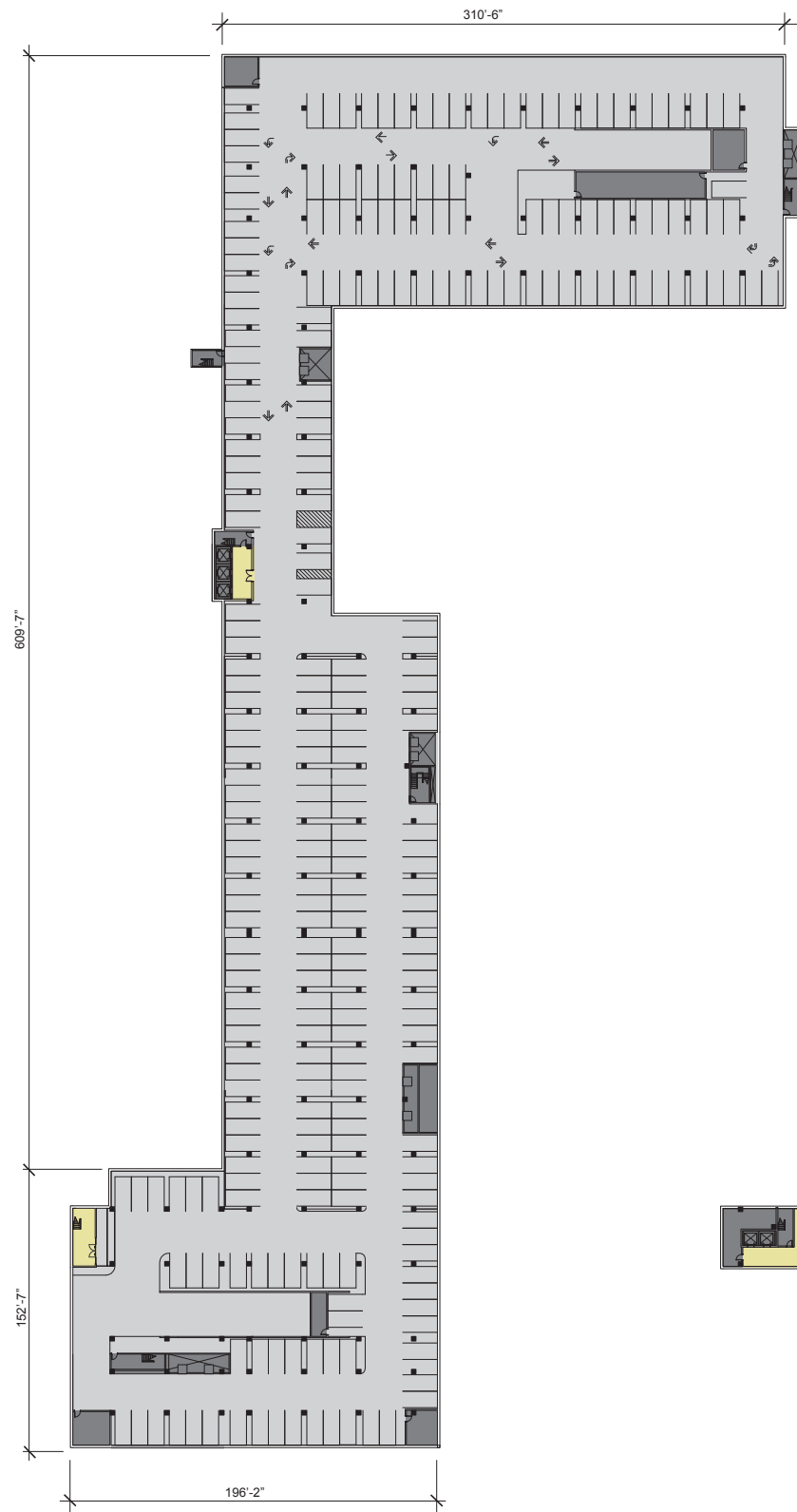


WEST ELEVATION

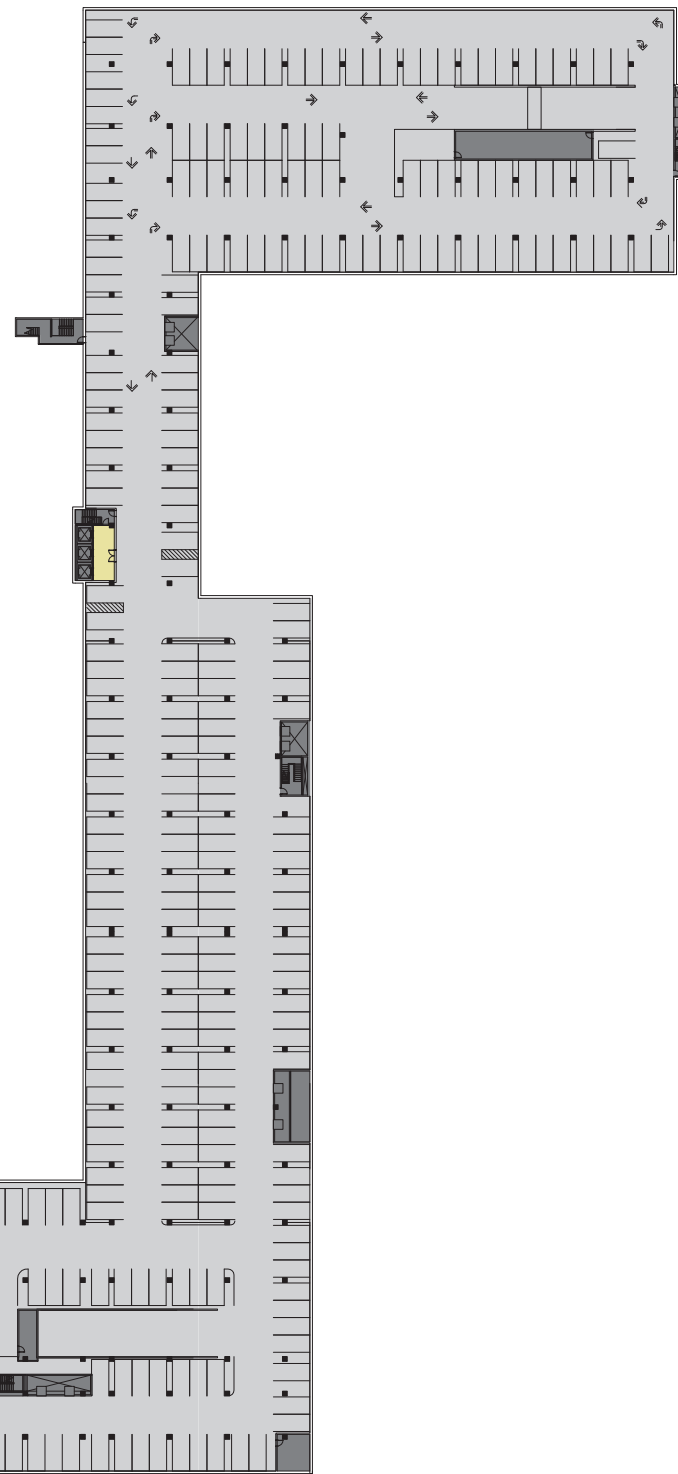


SOUTH ELEVATION

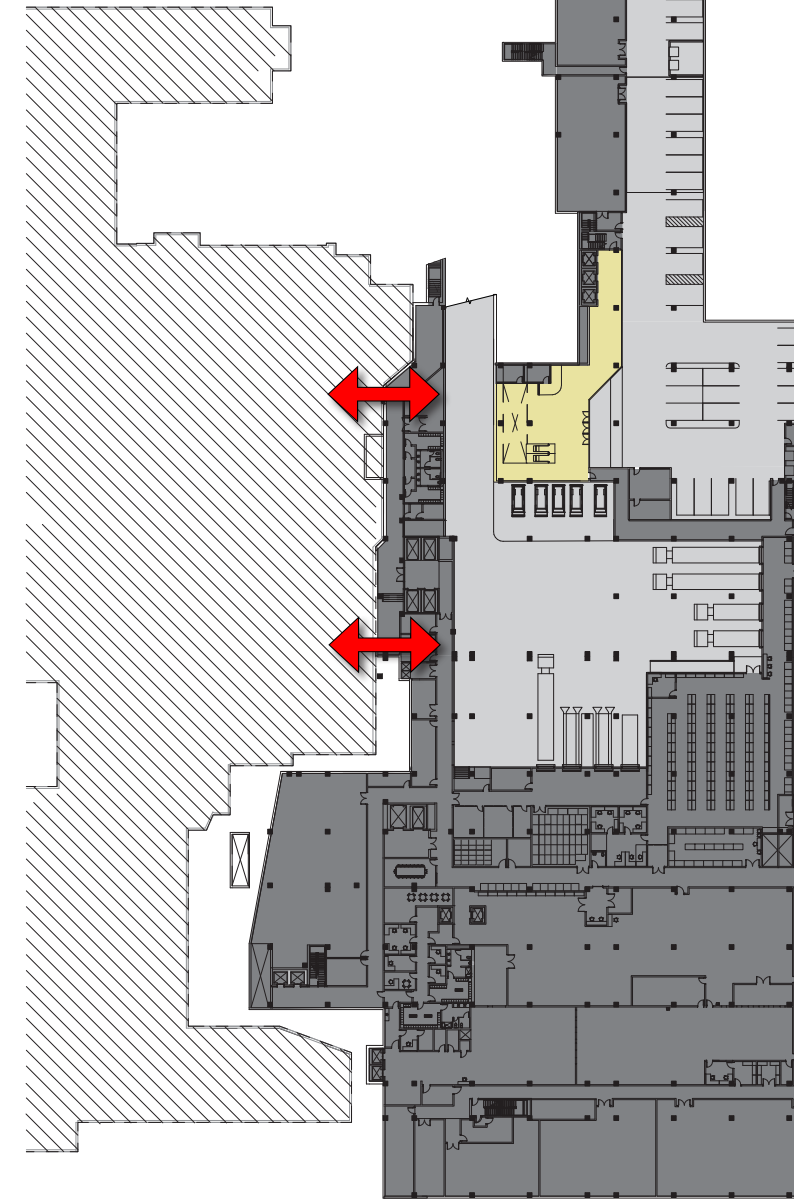




**LEVEL P3**



**LEVEL P2**



**LEVEL P1**

**LEGEND**

- PARKING/LOADING
- BOH / MECHANICAL
- PUBLIC
- CONNECTION TO EXISTING



**Notes:**

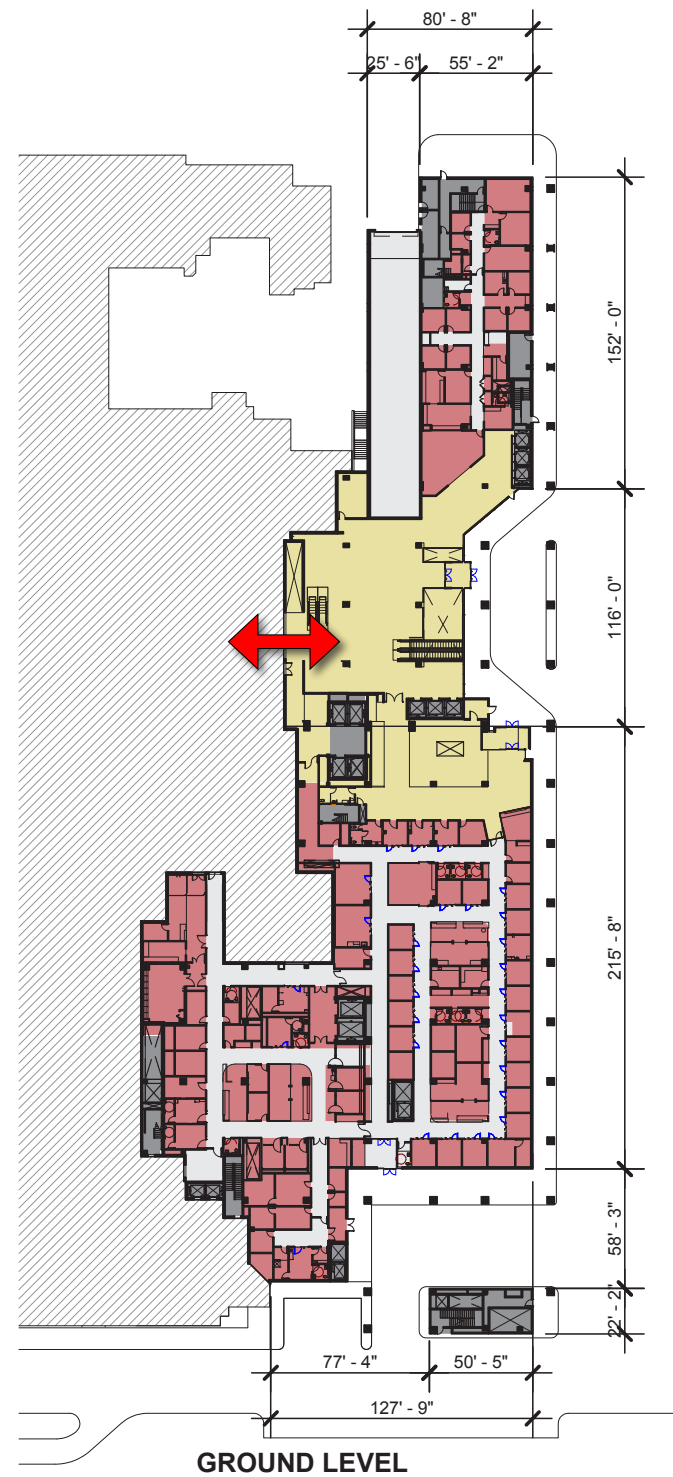
1: The interior plan layouts are schematic, and shown for illustrative purposes only. Final layouts may vary.



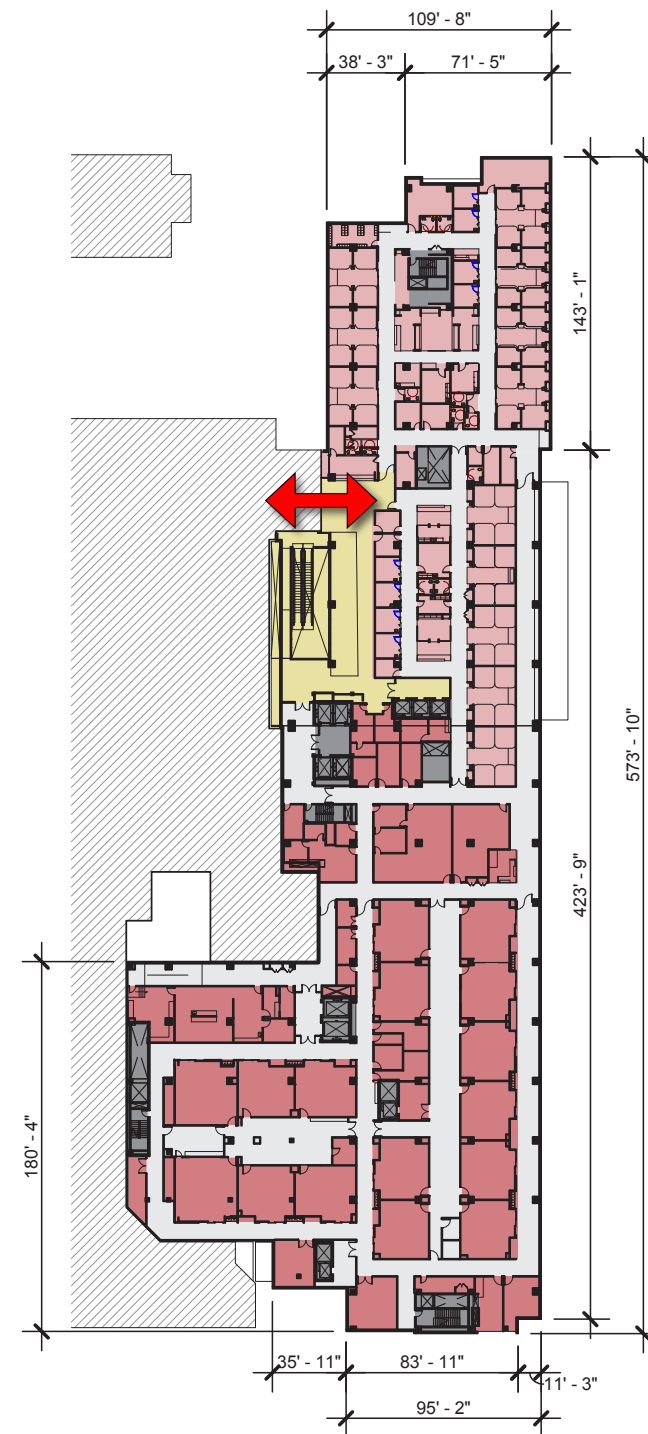
**SURGICAL PAVILION**

WASHINGTON, DC

FLOOR PLAN LEVEL P3-P1 | 5.10



GROUND LEVEL



LEVEL 01



LEVEL 02



Notes:

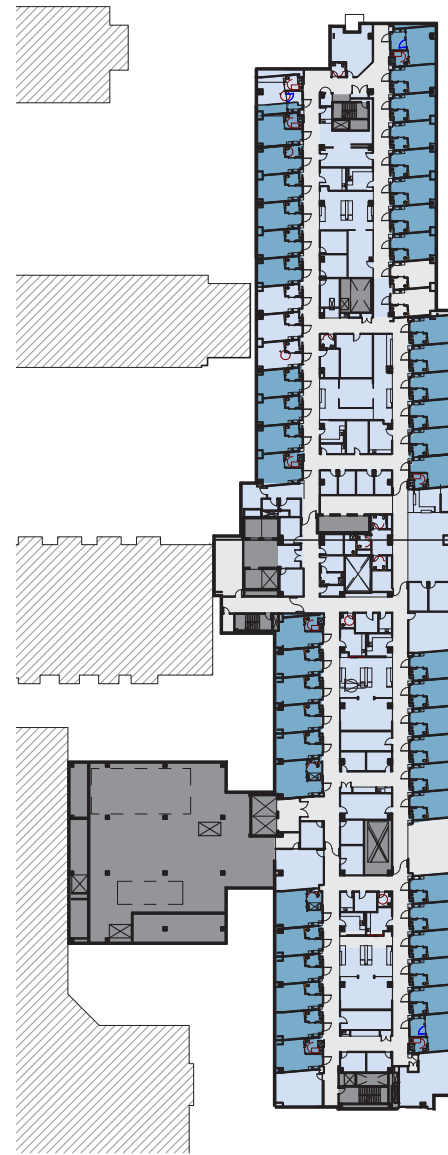
1: The interior plan layouts are schematic, and shown for illustrative purposes only. Final layouts may vary.

LEGEND

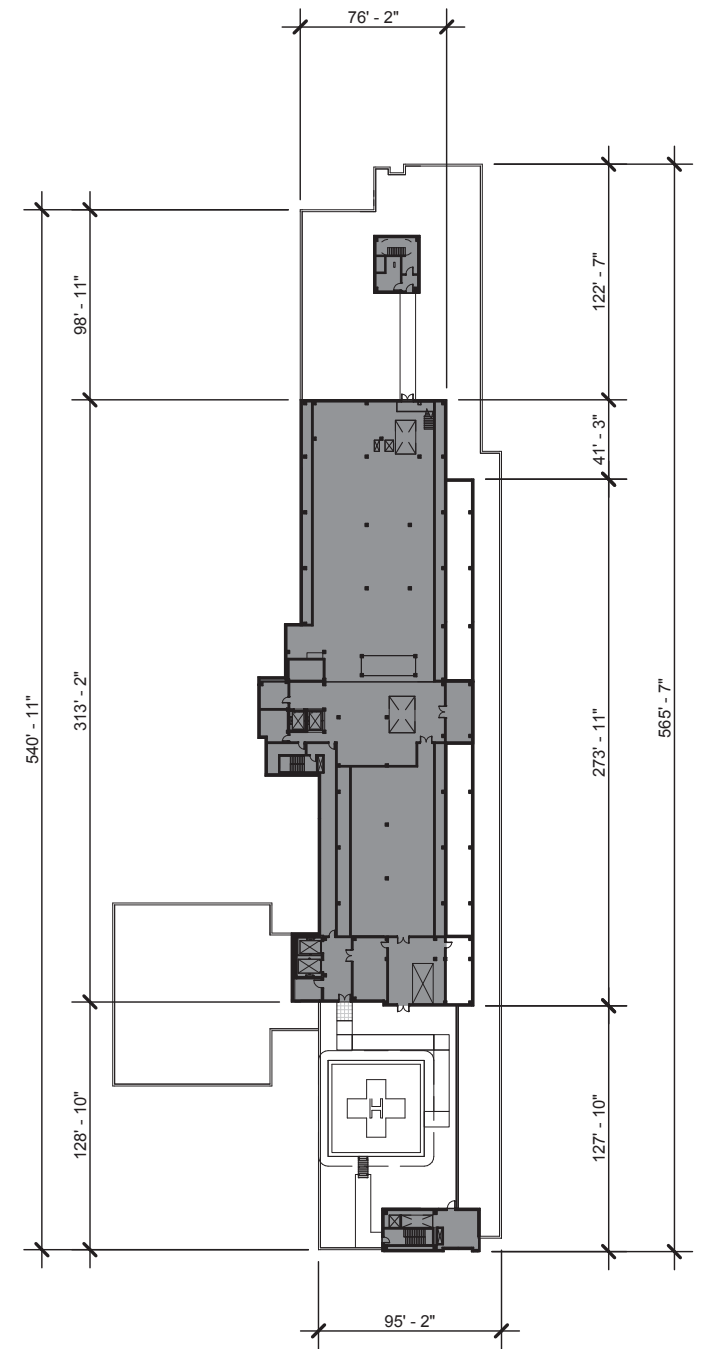
- PATIENT ROOM/ RECOVERY
- EXAM/SURGERY
- MECHANICAL/ CIRCULATION
- PUBLIC
- CONNECTION TO EXISTING



LEVEL 03



LEVEL 04  
LEVEL 05 SIM



PH LEVEL - REFER TO 5.12



Notes:

1: The interior plan layouts are schematic, and shown for illustrative purposes only. Final layouts may vary.

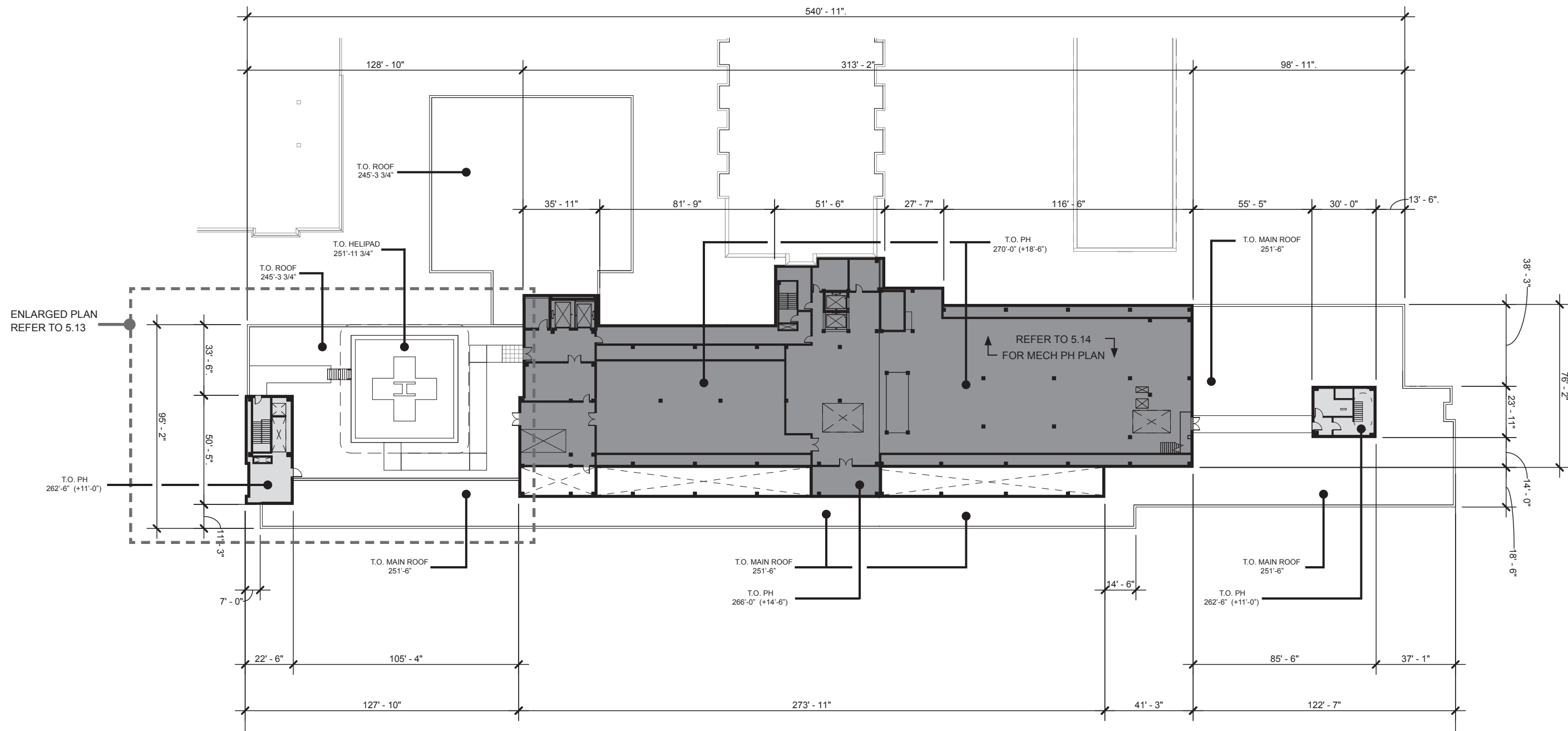
LEGEND

- PATIENT ROOM
- PATIENT SUPPORT
- MECHANICAL/CIRCULATION
- PUBLIC



CONNECTION TO EXISTING

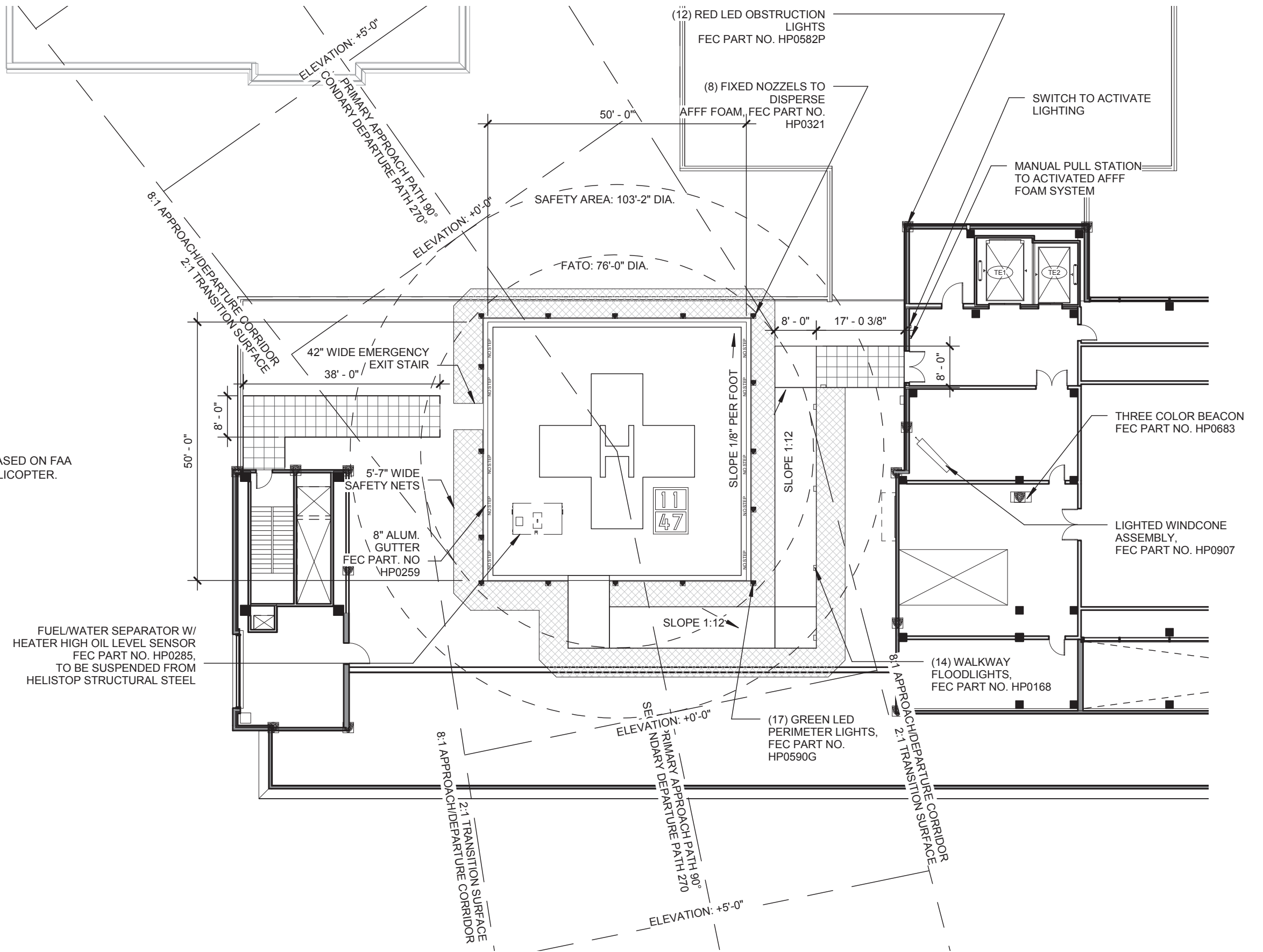




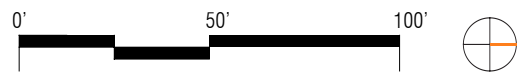
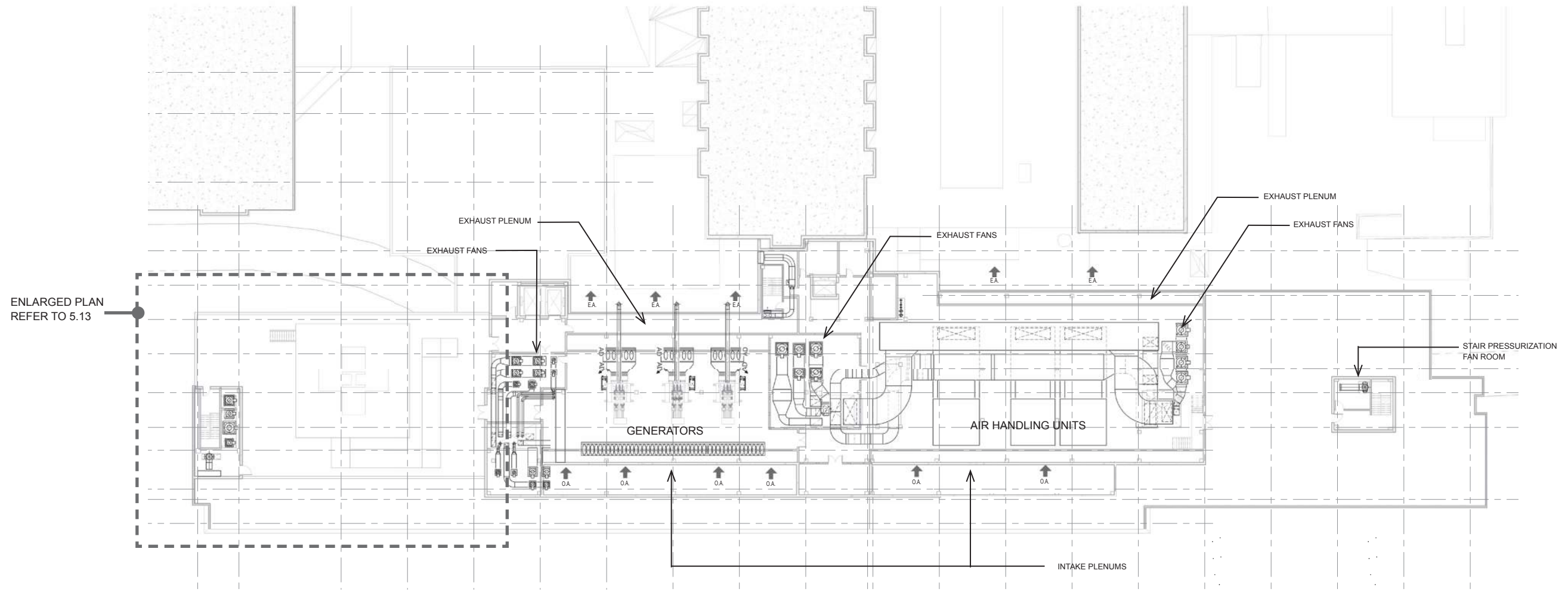
Notes:  
 1: The interior plan layouts are schematic, and shown for illustrative purposes only. Final layouts may vary.

NOTES:

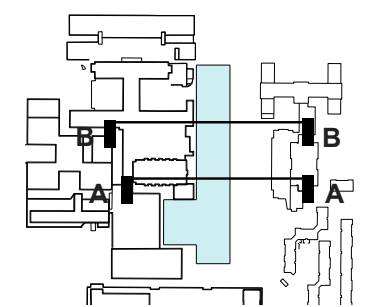
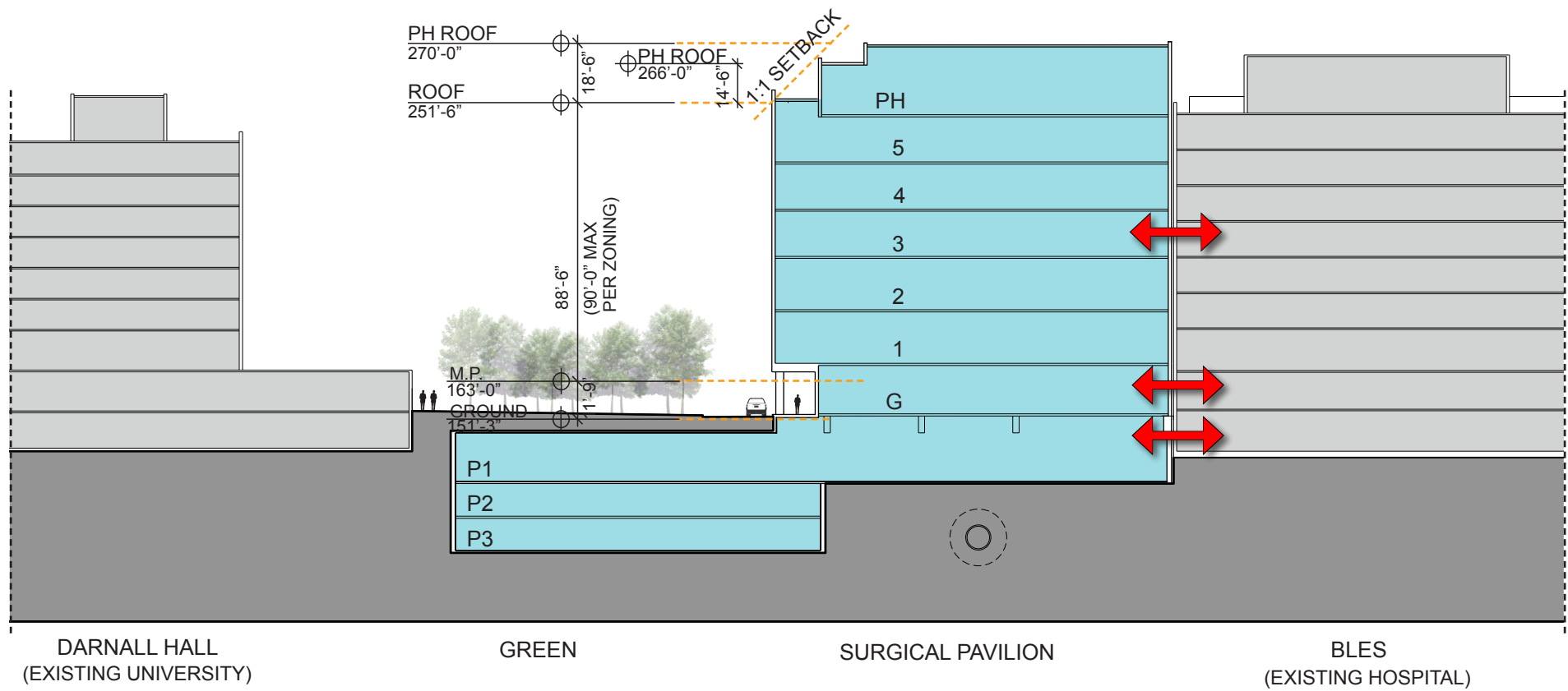
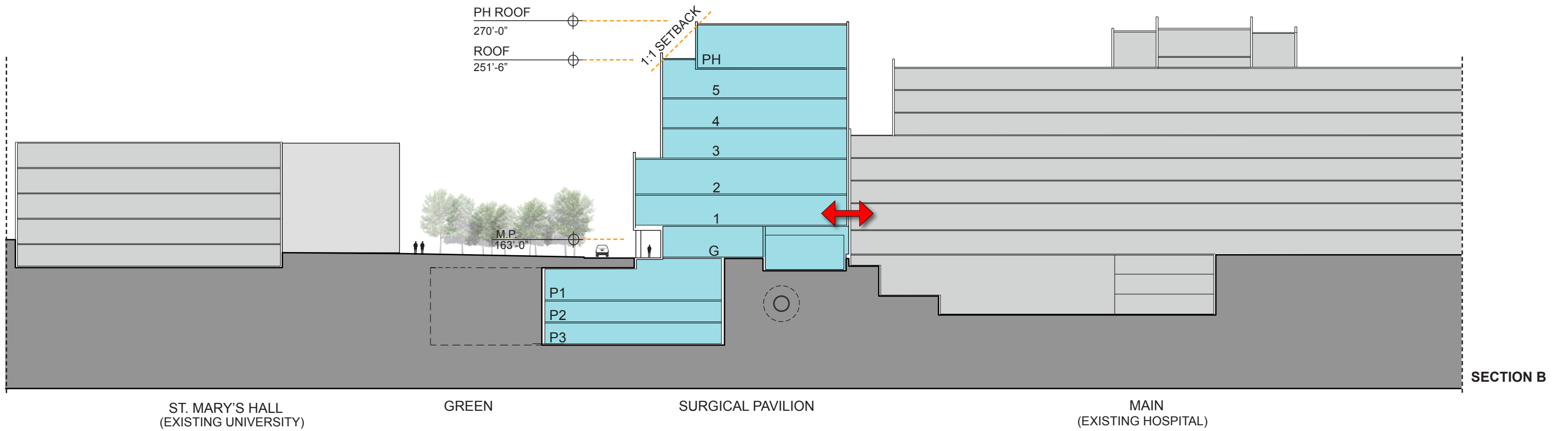
- HELIPAD DATA:  
 DESIGN AIRCRAFT CRITERIA:  
 TYPE: EC-155  
 ROTOR DIA.: 41'-4"  
 MAX TAKEOFF WEIGHT: 11,000 LBS  
  
 HELIPAD LOCATION:  
 LAT: 99 45' 34"  
 LONG: 99 45' 34"  
  
 APPROACH/DEPARTURE:  
 INGRESS: 99"  
 EGRESS: 99"  
  
 PREVAILING WINDS:  
 DIRECT1: NW  
 DIRECT2: N
- HELISTOP DIMENSIONS AND CLEARANCES ARE BASED ON FAA AC 150/5390-2B REQUIREMENTS FOR A EC-155 HELICOPTER.
- VFR APPROACH/DEPARTURE SLOPE 8:1, TRANSITION SURFACE 2:1

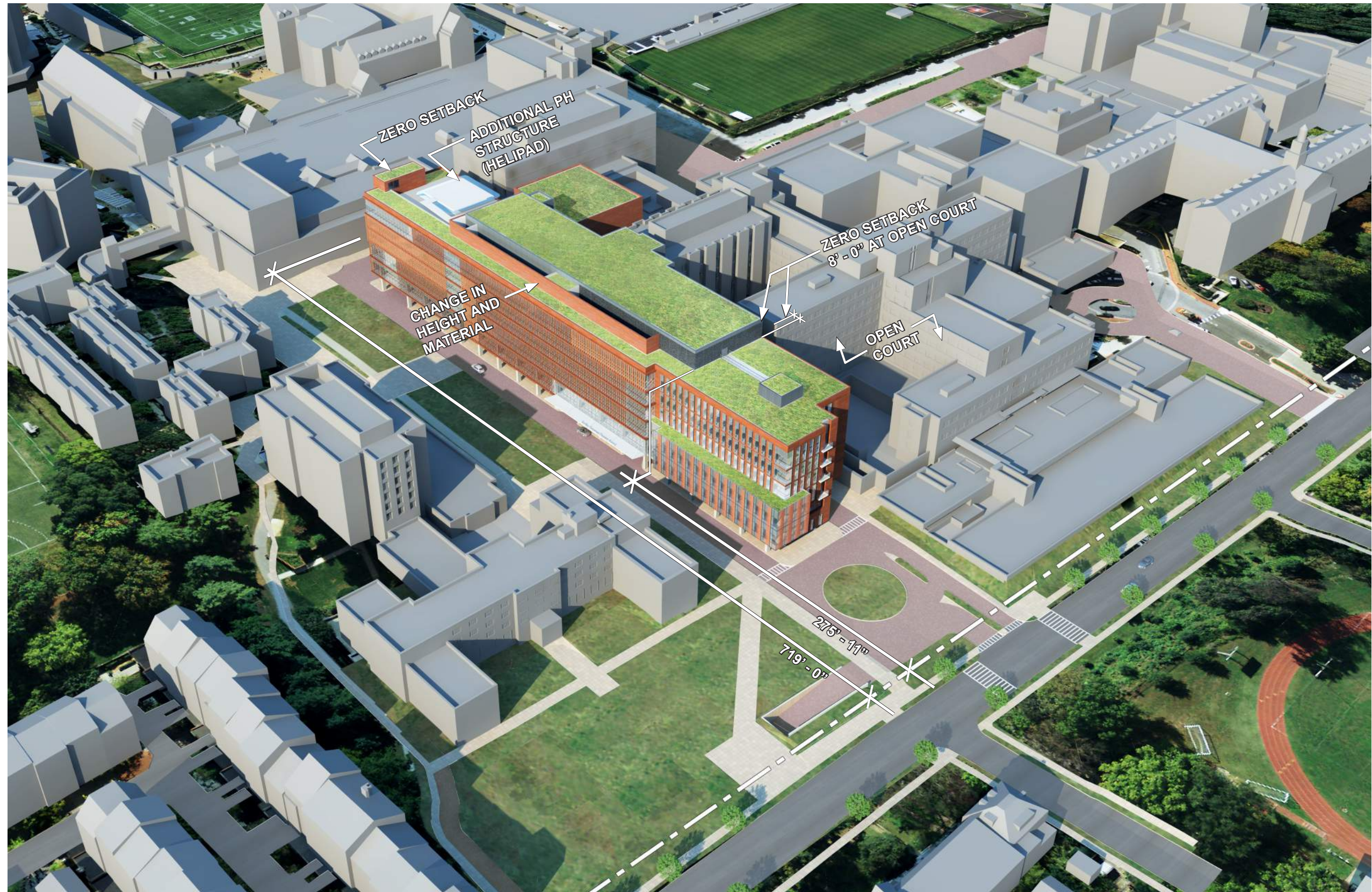


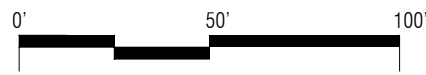
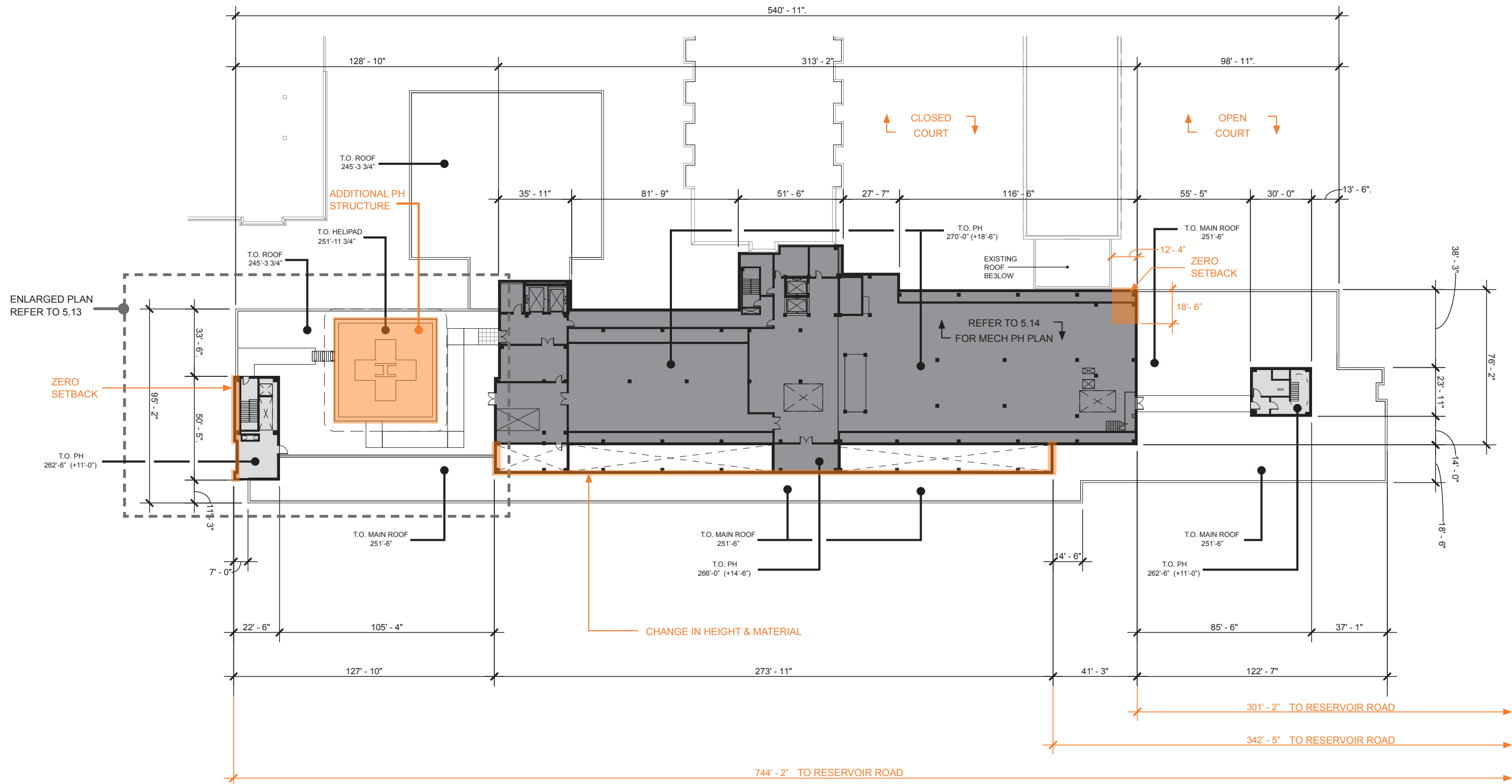












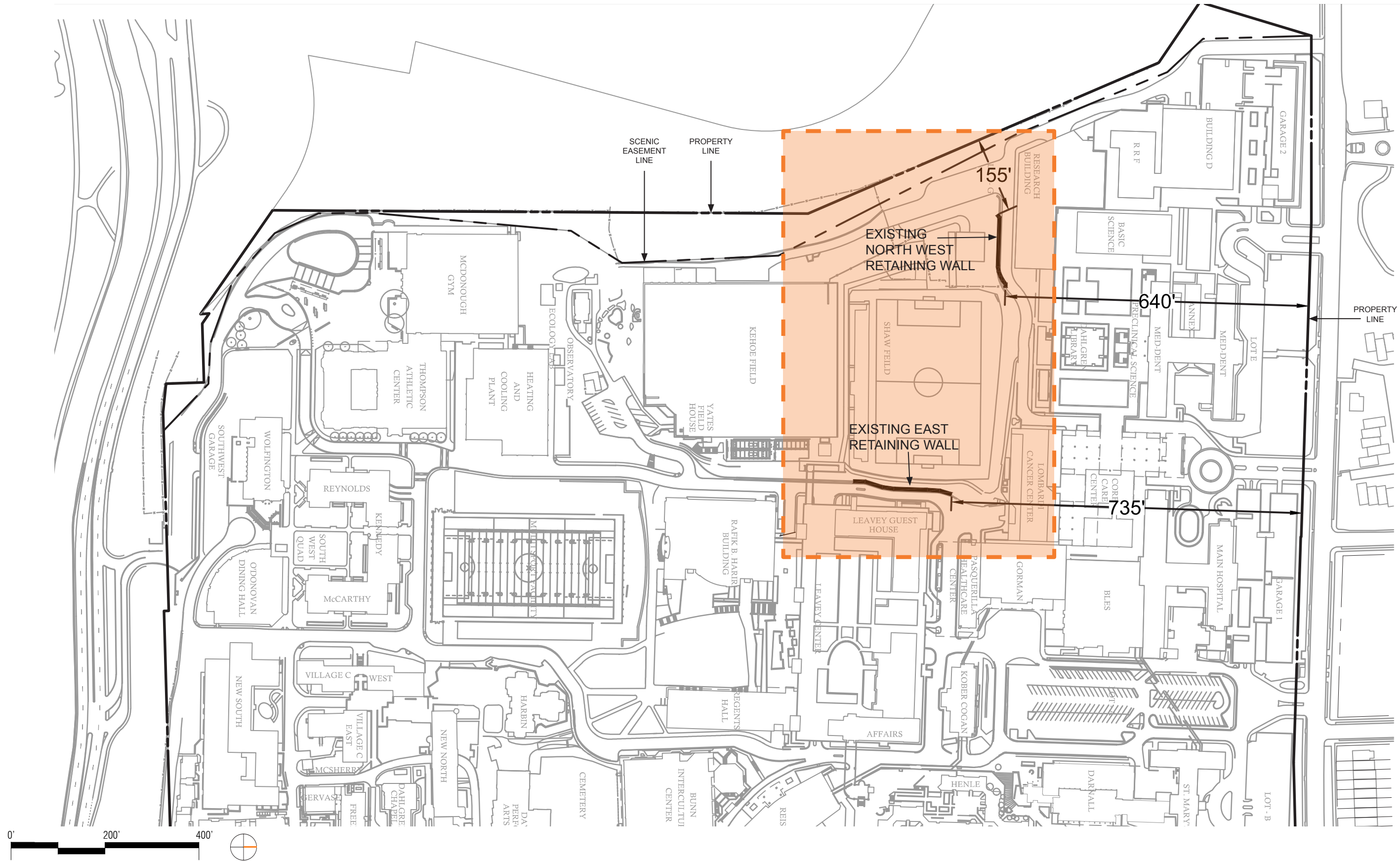
Notes:  
 1: The interior plan layouts are schematic, and shown for illustrative purposes only. Final layouts may vary.



## *East West Road – Retaining Wall*

- North campus topography consists of significant grade changes
- Retaining walls and steep cut backs are utilized to resolve elevation changes
- Existing retaining wall heights: 5' to 23'





PLAN COURTESY OF DEWBERRY CONSULTANTS LLC

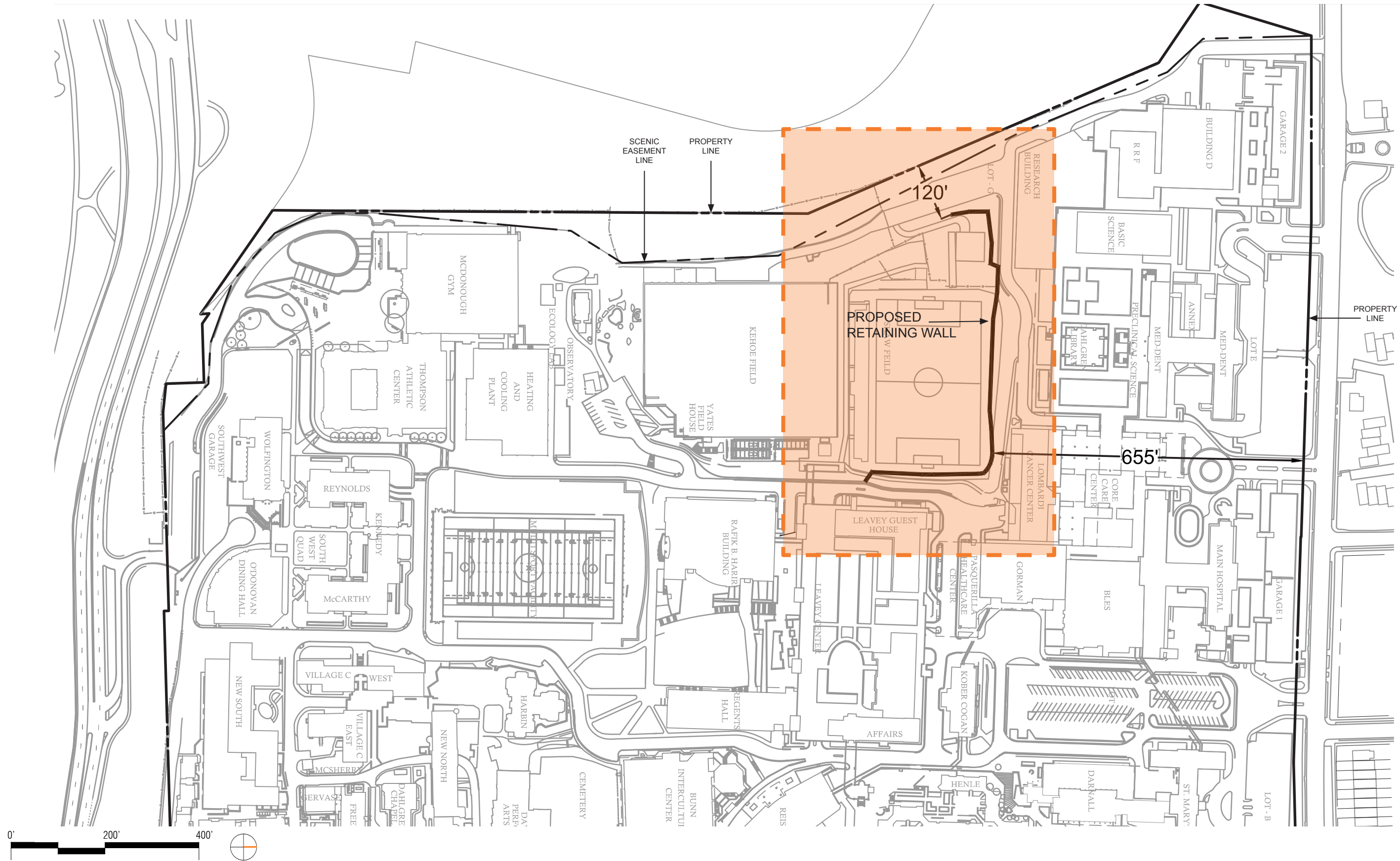


# SURGICAL PAVILION

WASHINGTON, DC

EXISTING RETAINING WALL LOCATION PLAN 6.2





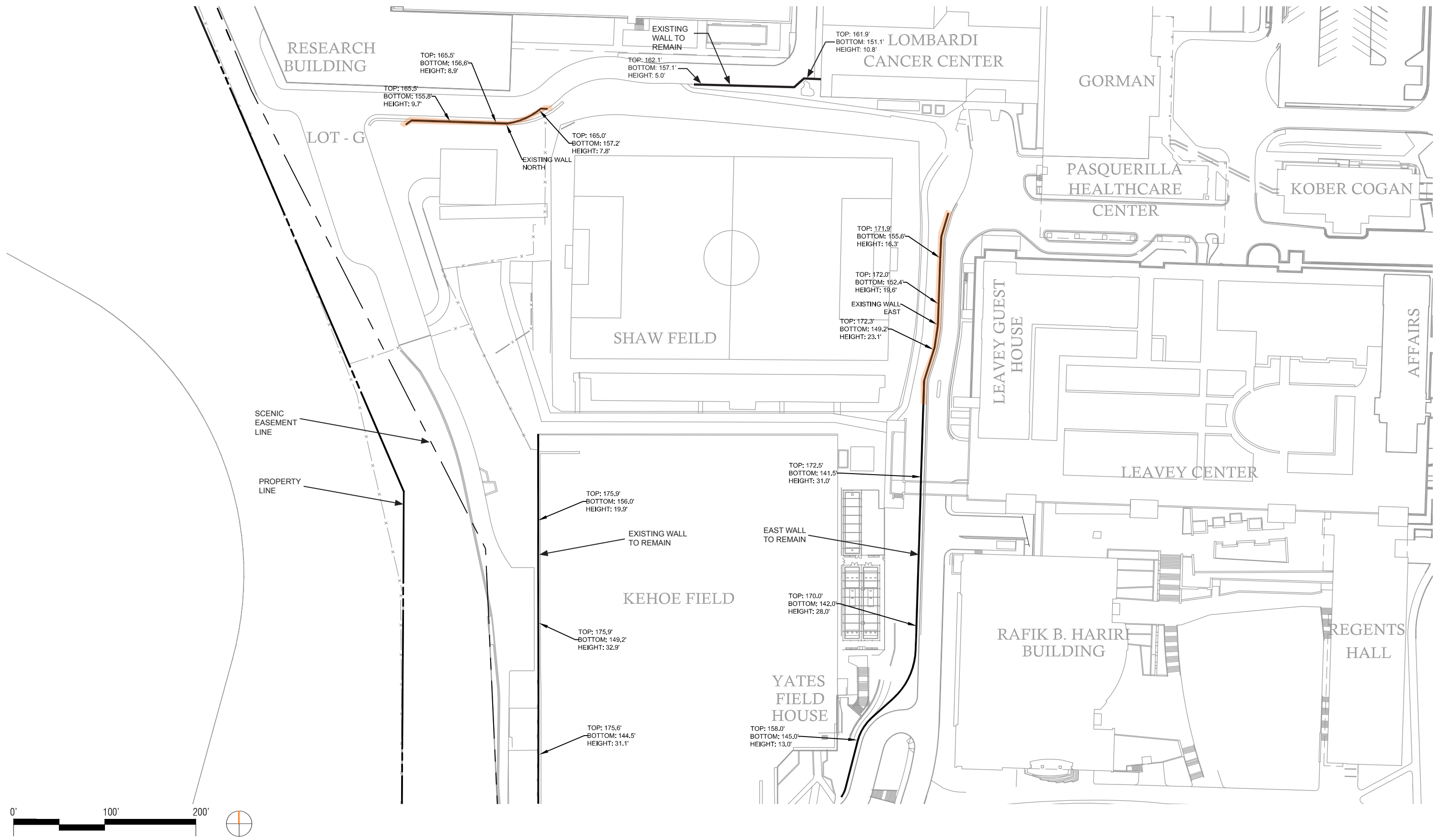
PLAN COURTESY OF DEWBERRY CONSULTANTS LLC



# SURGICAL PAVILION

WASHINGTON, DC

PROPOSED RETAINING WALL LOCATION PLAN 6.3



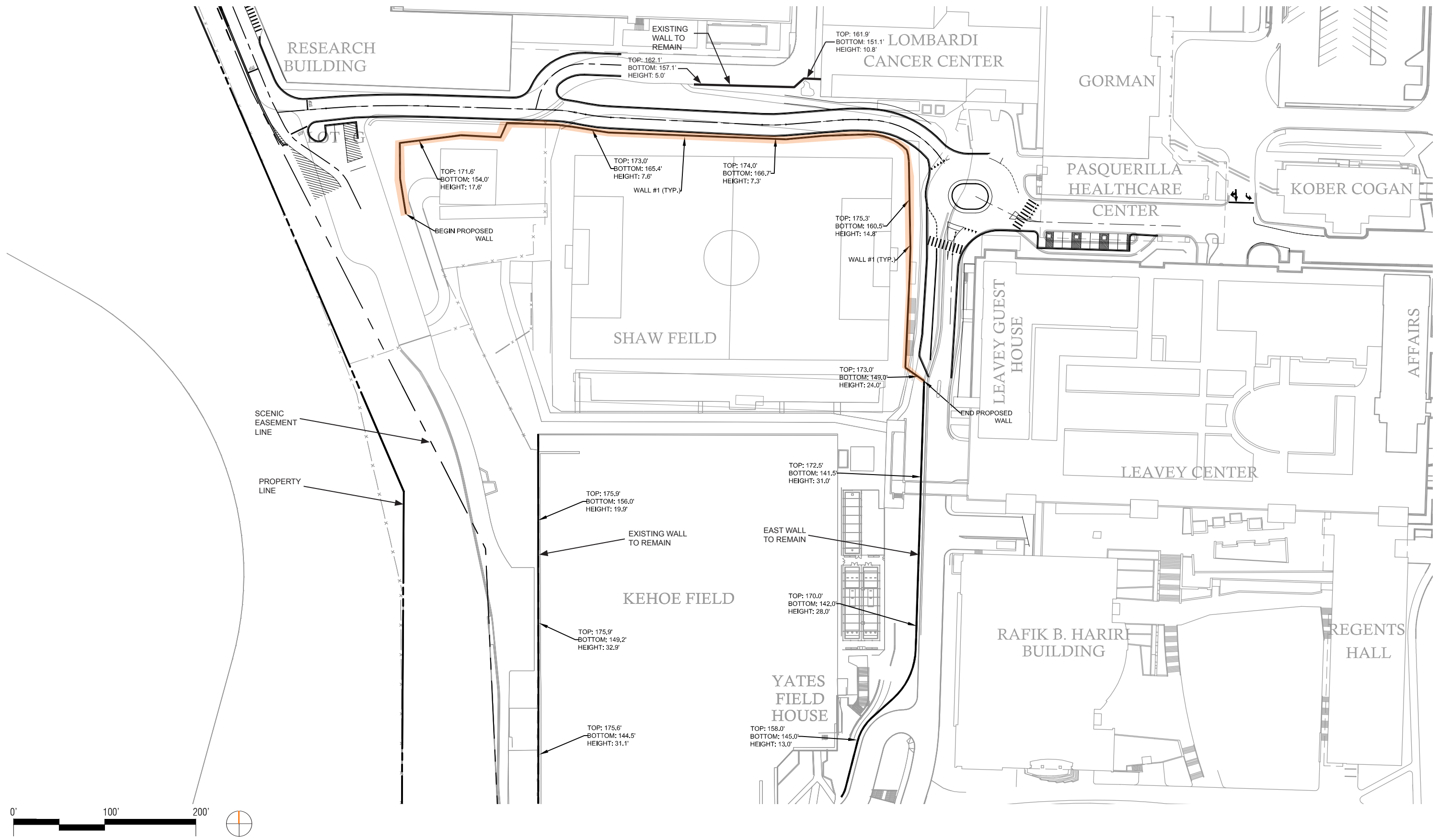
PLAN COURTESY OF DEWBERRY CONSULTANTS LLC



# SURGICAL PAVILION

WASHINGTON, DC

EXISTING RETAINING WALL HEIGHT DIAGRAM | 6.4



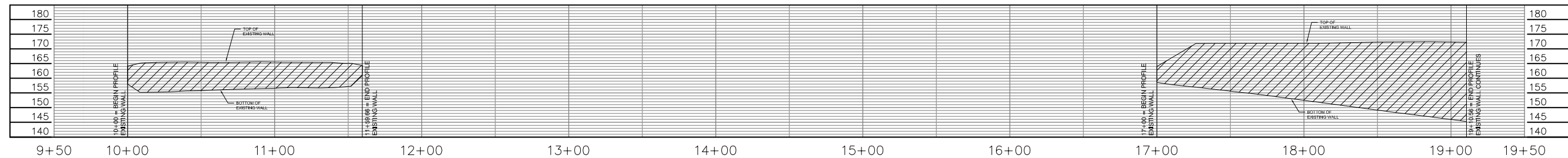
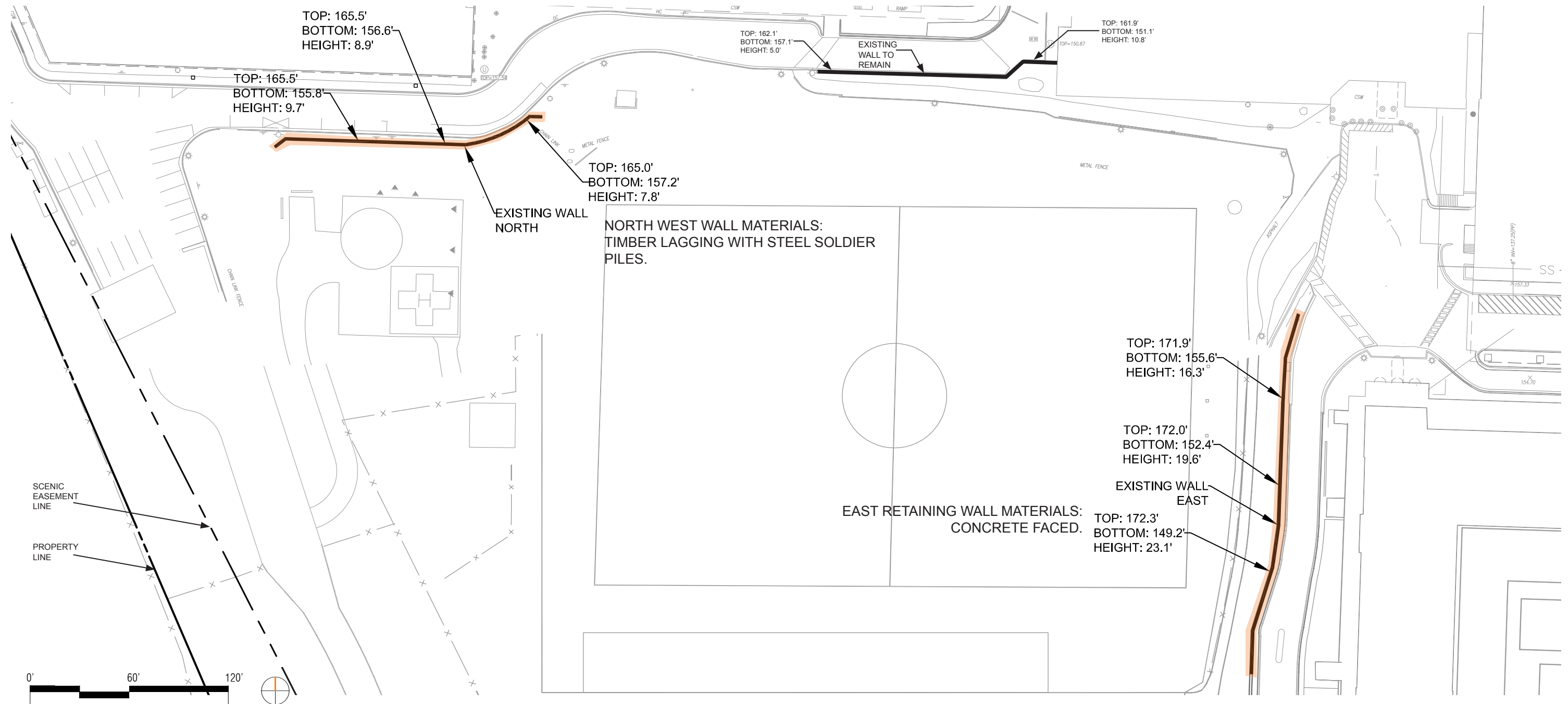
PLAN COURTESY OF DEWBERRY CONSULTANTS LLC



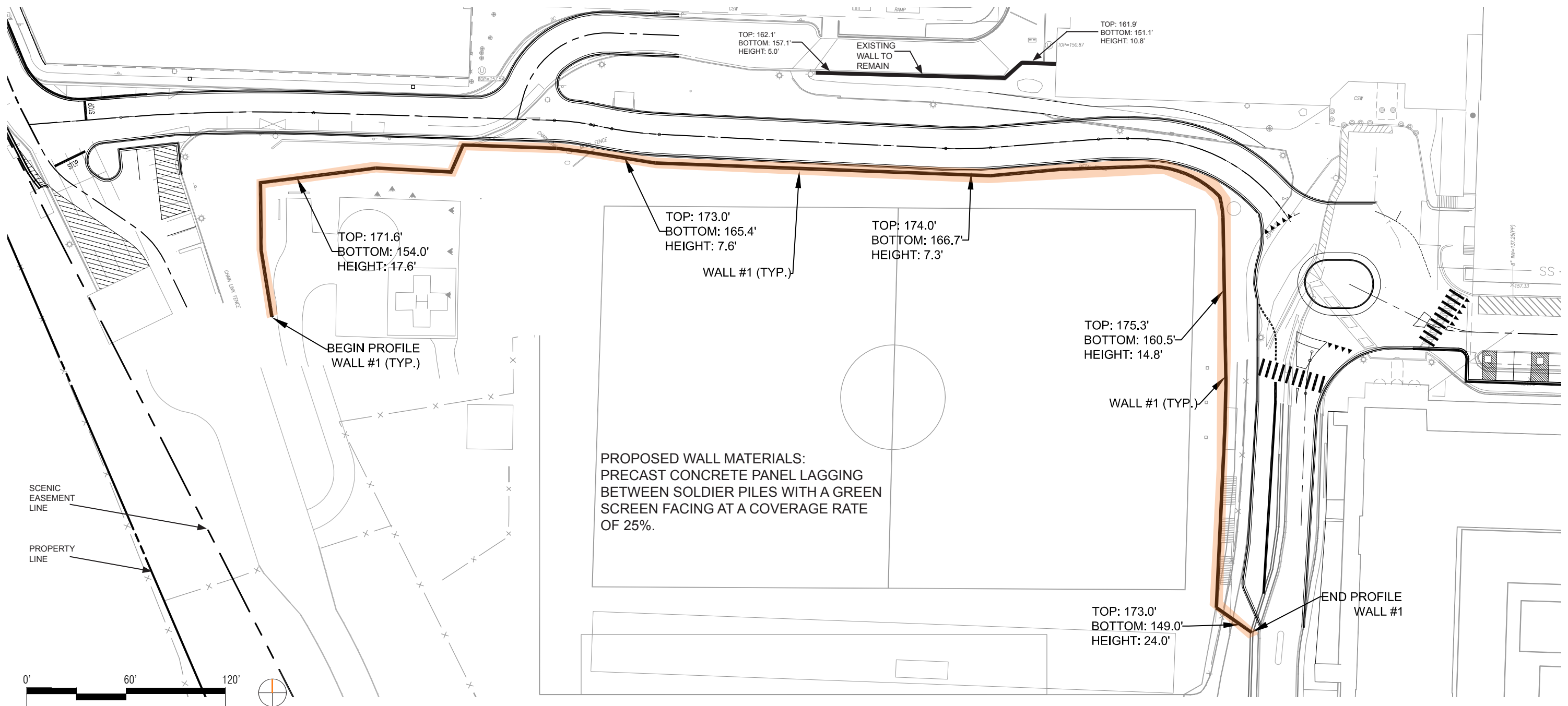
# SURGICAL PAVILION

WASHINGTON, DC

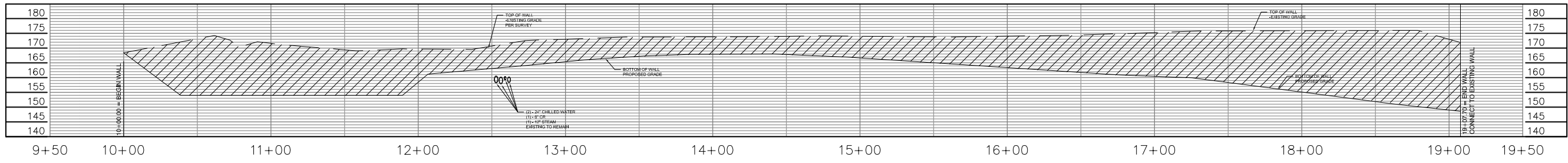
PROPOSED RETAINING WALL HEIGHT DIAGRAM | 6.5



EXISTING PLAN AND PROFILE COURTESY OF DEWBERRY CONSULTANTS LLC



Note: Retaining wall horizontal and vertical geometry is conceptual in nature, and is subject to adjustment during final design.



CONCEPT PLAN AND PROFILE COURTESY OF DEWBERRY CONSULTANTS LLC



# SURGICAL PAVILION

WASHINGTON, DC

## PROPOSED RETAINING WALL CONCEPT PLAN AND PROFILE 6.7